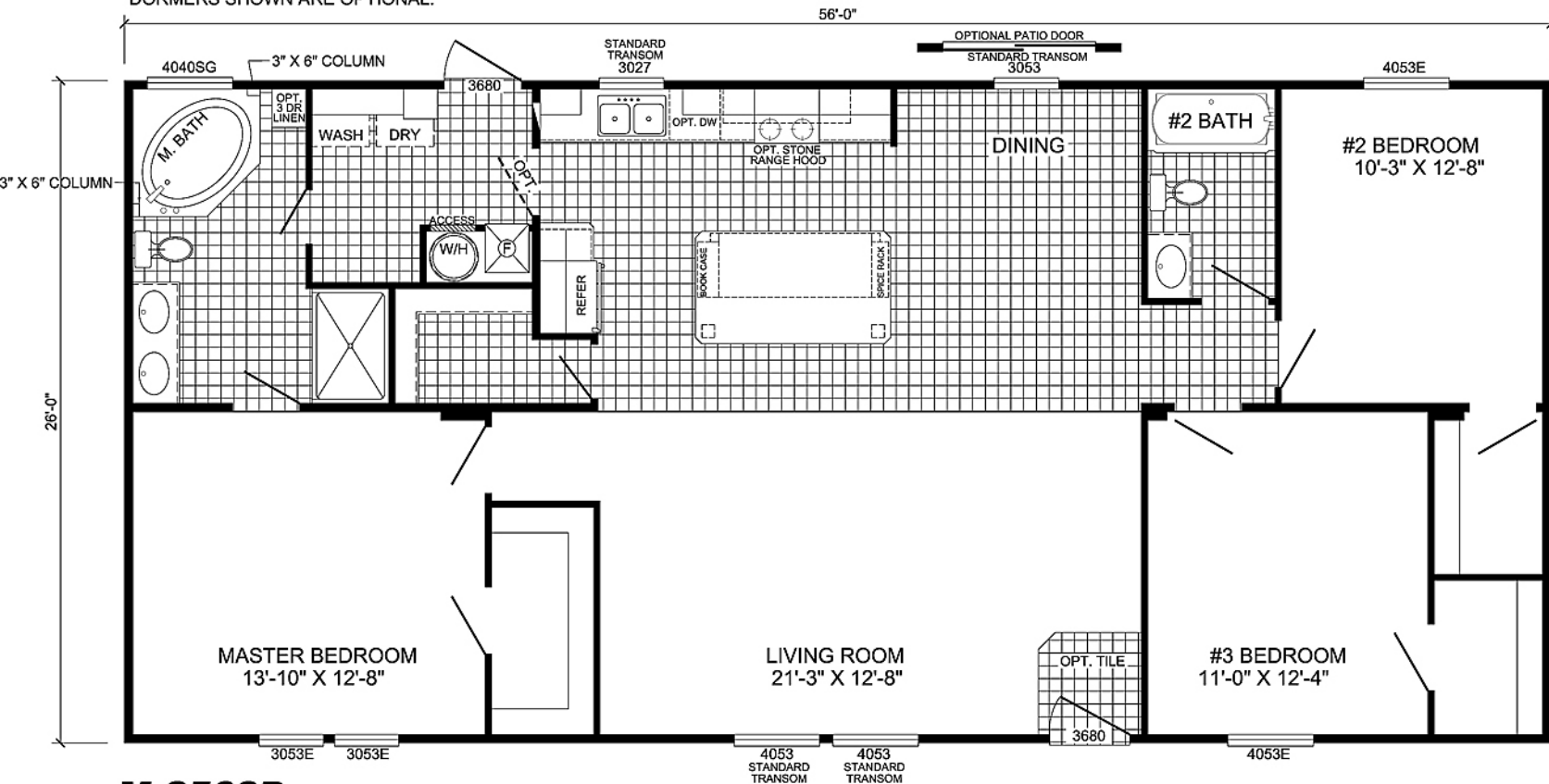


BLAZER



DORMERS SHOWN ARE OPTIONAL.



M-2563D

3-BEDROOM / 2-BATH

28 x 60 - Approx. 1456 Sq. Ft.

Date: 6-9-2011

* All room dimensions include closets and square footage figures are approximate.

* Transom windows are available on optional 9'-0" sidewall houses only.