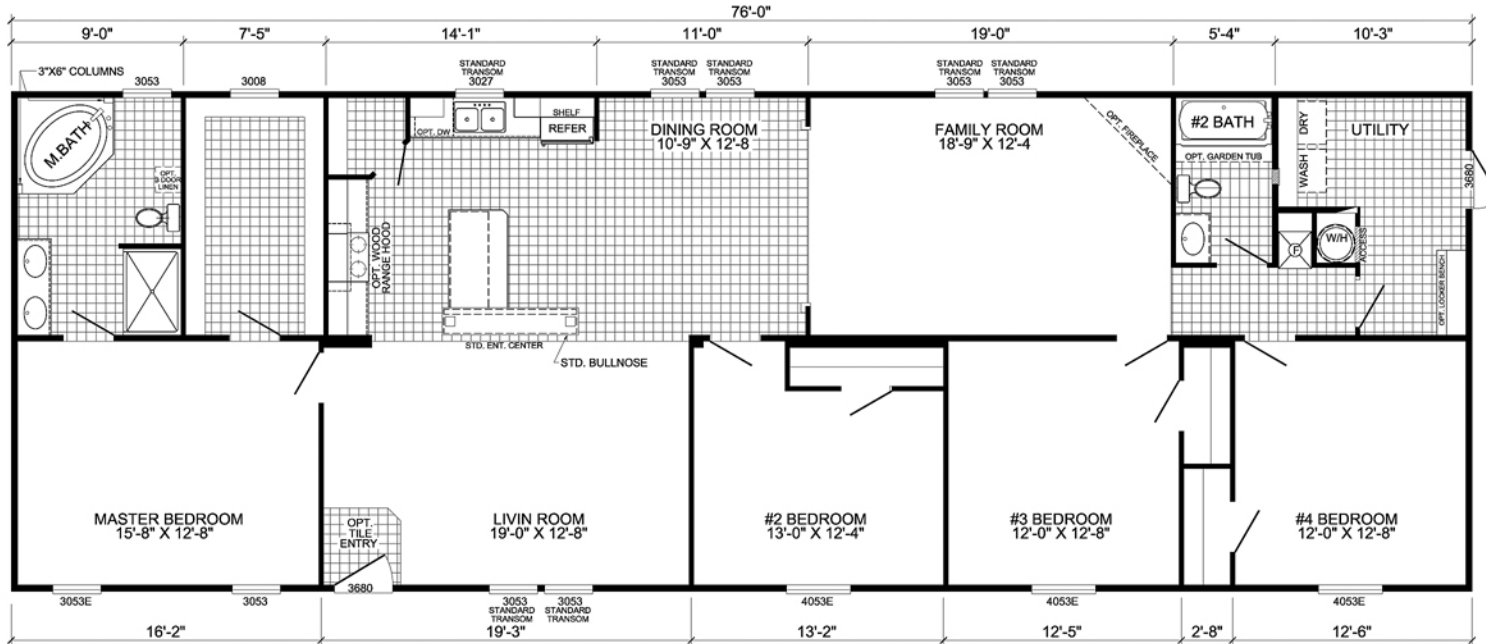
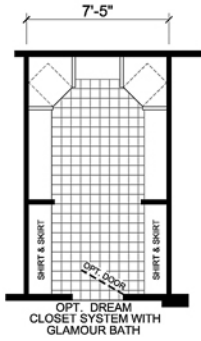
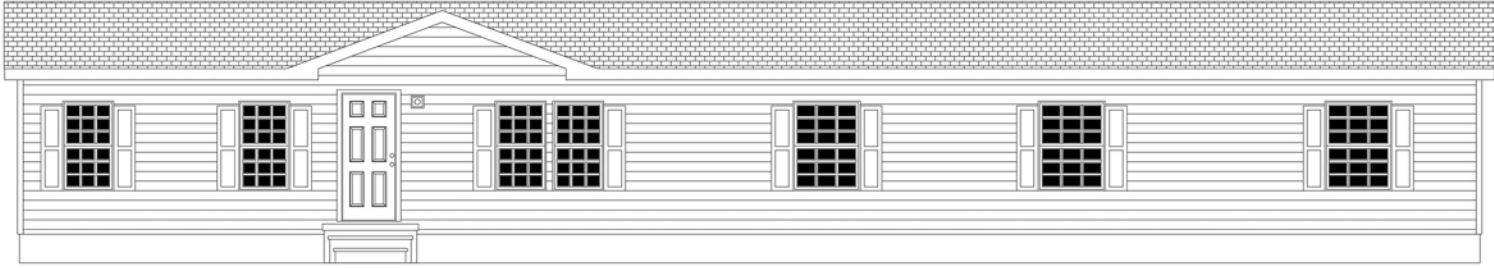


# ALABAMA



**M-2764C**  
**4-BEDROOM / 2-BATH**  
**28 X 80 - Approx. 1976 Sq. Ft.**

6-19-2012  
 \* All room dimensions include closets and square footage figures are approximate.  
 \* Transom windows are available on optional 9'-0" sidewall houses only.  
 \* Underpinning shown is optional.