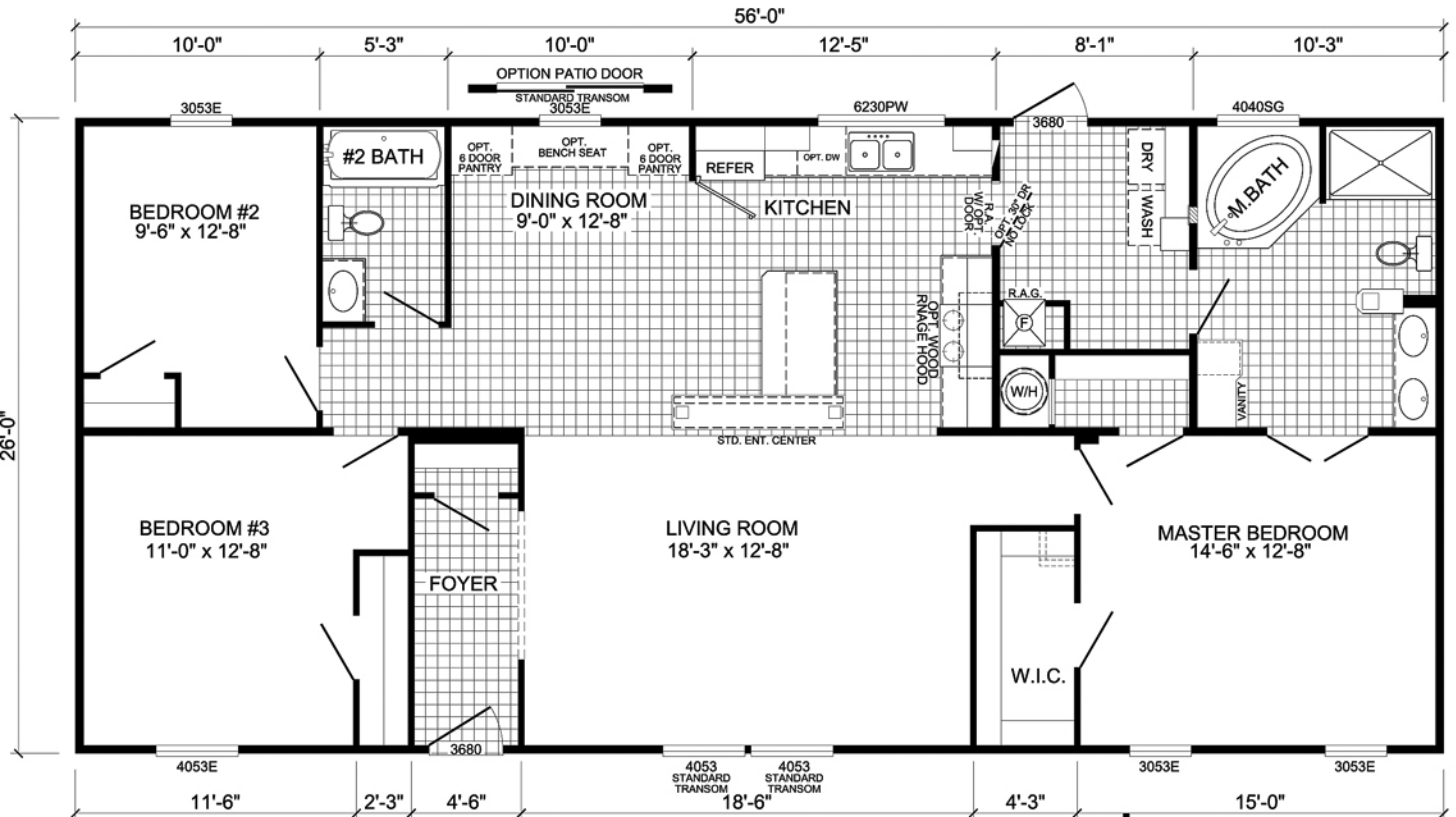
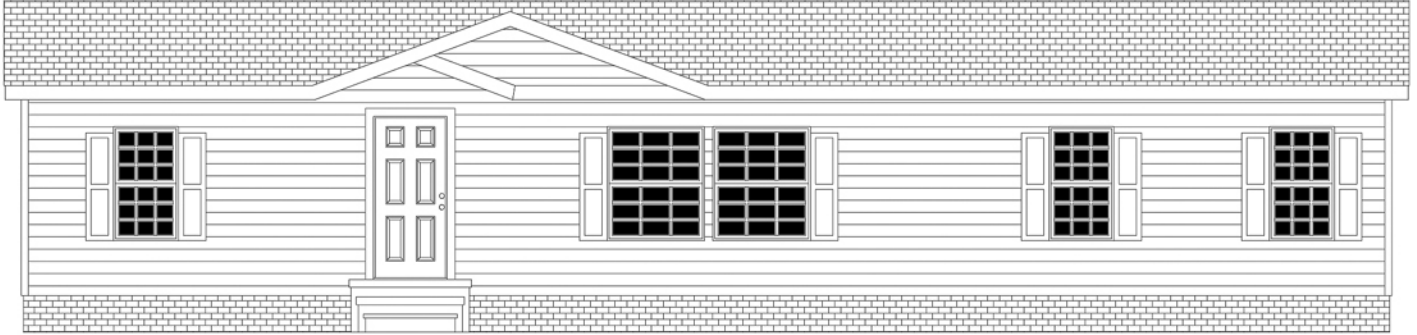


BOMBER



S-2563E

3-BEDROOM / 2-BATH

28 x 60 - Approx. 1456 Sq. Ft.

Date: 4-25-2012

* All room dimensions include closets and square footage figures are approximate.

* Transom windows are available on optional 9'-0" sidewall houses only.

OPTIONAL
ENTERTAINMENT
CENTER