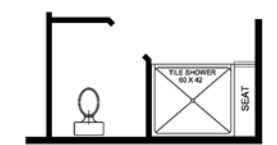
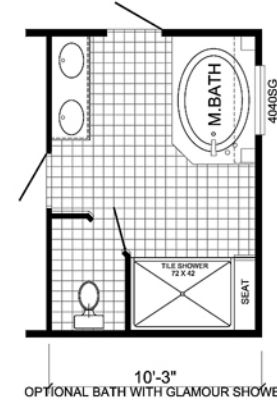
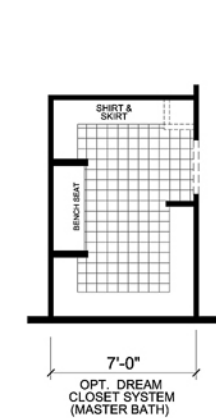
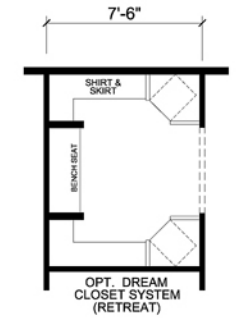
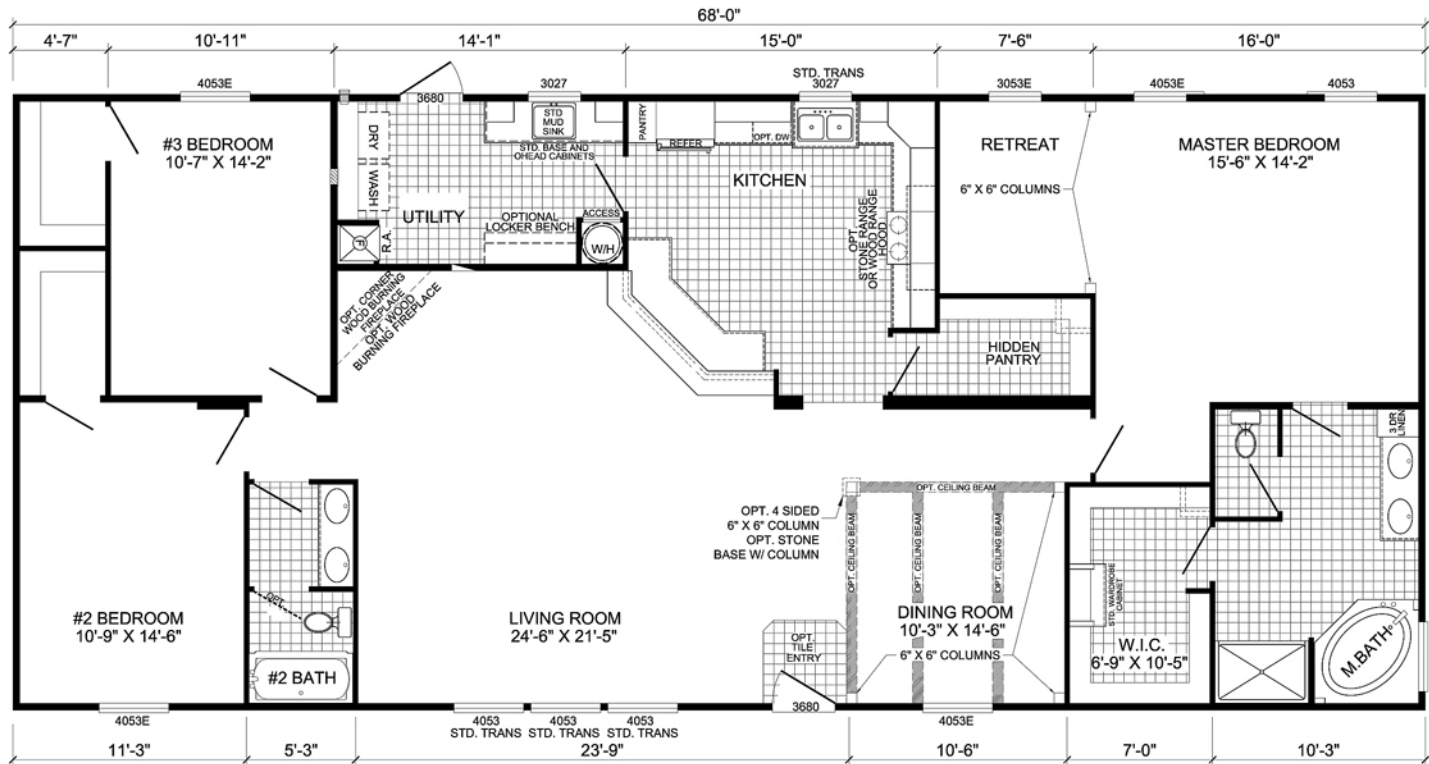


# ULTIMATE



**U-3683B**  
**3-BEDROOM / 2-BATH**  
**32 X 72 - Approx. 2027 Sq. Ft.**

Date: 11-4-2011  
 \* All room dimensions include closets and square footage figures are approximate.  
 \* Transom windows are available on optional 9'-0" sidewall houses only.  
 \* Available with Libeals or Shutters around windows.